

Series NPF flexible suction pad mountings

The vulcanisation provides flexibility in all directions.
Thread G1/4

SERIES NPF SUCTION PAD MOUNTINGS



- » Flexible in all directions for optimal adaption to the workpiece (up to 12°)
- » Low pivoting point which reduces the wear on the suction pad.
- » Rubber covered (vulcanised) metal connection for heavy loads.

Series NPF flexible suction pad mounting allows a better adaption between the suction pad and the workpiece due to its flexibility in all directions.

Applications:

- Suitable for use in conjunction with larger flat suction pads on bigger workpieces which are either inclined or have a tendency to sag during the lifting operation or simply have a slightly irregular shape.
- They can be used in combination with spring plungers for further compensation in height if needed.

GENERAL DATA

- Description** Flexible suction pad mounting
- Materials**
- Steel body
 - Vulcanised rubber connection

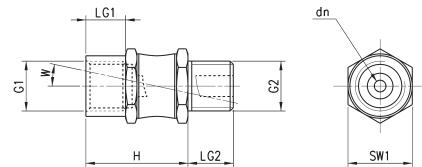
CODING EXAMPLE

| | | | | | | |
|-----------------|---|-----------|---|------------|---|-------------------|
| NPF | - | FM | - | 1/4 | - | M10 X 1,25 |
| NPF | SERIES NPF = Flexible suction pad mountings | | | | | |
| FM | THREAD VERSION FM = G1 Female / G2 Male | | | | | |
| 1/4 | FEMALE THREAD G1 1/4 = G1/4 | | | | | |
| M10x1,25 | MALE THREAD G2 M10x1,25 = M10x1,25 1/4 = G1/4 | | | | | |

Flexible suction pad mountings Series NPF



- * G1 = Female thread (F)
- ** G2 = Male thread (M)



| DIMENSIONS | | | | | | | | | | | | |
|----------------------------|-----|--------|------------|----|------|-----|-----|------|-------------------|---------------------|------------|--|
| Mod. | dn | G1 * | G2 ** | H | LG1 | LG2 | SW1 | W(°) | Vertical load (N) | Bending moment (Nm) | Weight (g) | |
| NPF-FM-1/4-M10X1,25 | 2,8 | G1/4 F | M10X1,25 M | 27 | 10,5 | 8 | 17 | 12 | 500 | 8 | 26 | |
| NPF-FM-1/4-1/4 | 3 | G1/4 F | G1/4 M | 27 | 12 | 12 | 17 | 12 | 750 | 10 | 30 | |